

CERTIFICATE OF LOCATION OF GOVERNMENT CORNER

North Quarter Corner of Section 23, Township 108 N., Range 40 W., 5th P.M.

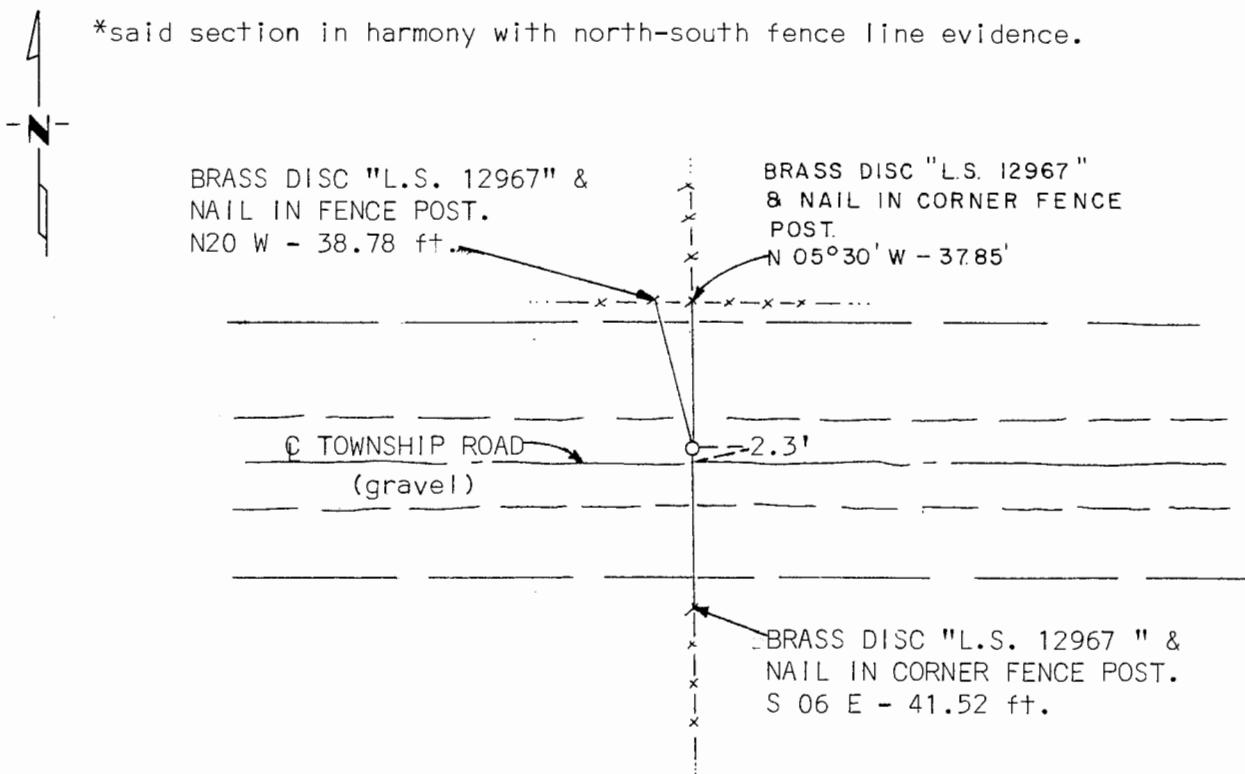
STATE OF MINNESOTA, County of Murray

At the corner location shown on the sketch:

- On _____ found a _____
DATE
- left monument as found, lowered monument, removed monument (explain)
- On Oct. 30, 1980 placed a 1/2" iron reinforcing bar with "L.S. 12967" cap on line
DATE
between and equidistant from the found northwest and northeast corners of*

SKETCH OF REFERENCE TIES

*said section in harmony with north-south fence line evidence.



I hereby certify that this document and the data contained herein was prepared by me or under my direct supervision.

SIGNATURE DATE

Registration No. 12967

Land Surveyor, Professional Engineer

County Surveyor, County Engineer

OFFICE OF THE COUNTY RECORDER
County of Murray

I hereby certify that this document was filed in the Co. Recorders office at 10^A .M. on the 18th day of February A.D., 19 82

County Recorder Willard W. Ohme

By _____, Deputy

DOCUMENT NO. _____